

Key collection



Key
collection



a journey into
Key collection



#KEYLARGO

#KEYWEST

#KEYHARBOR

Tre eleganti nuances che riportano alle morbide tonalità dei paesaggi marittimi ed una texture ricca di sfumature, per una collezione dal sapore caldo e contemporaneo.

A collection with a warm and contemporary mood created by three elegant nuances inspired by the soft hues of the seaside landscape and a fine shaded texture.



unicomstarker

KEY COLLECTION
Key Largo



#keycollection #keylargo
#60.4x60.4 #24"x24"



unicomstarker
key collection



Key Largo

#keycollection #keylargo
#60.4x60.4 #24"x24"





unicomstarker
key collection

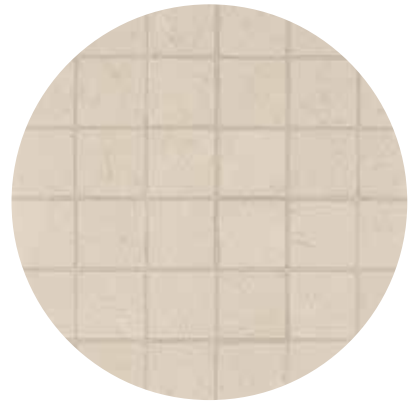


#keycollection #keylargo
#60.4x60.4 #24"x24"

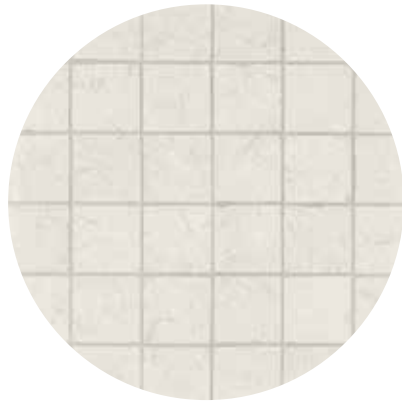
unicomstarker

Key mosaics

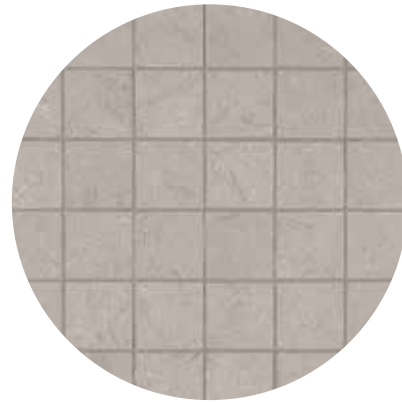
KEY COLLECTION



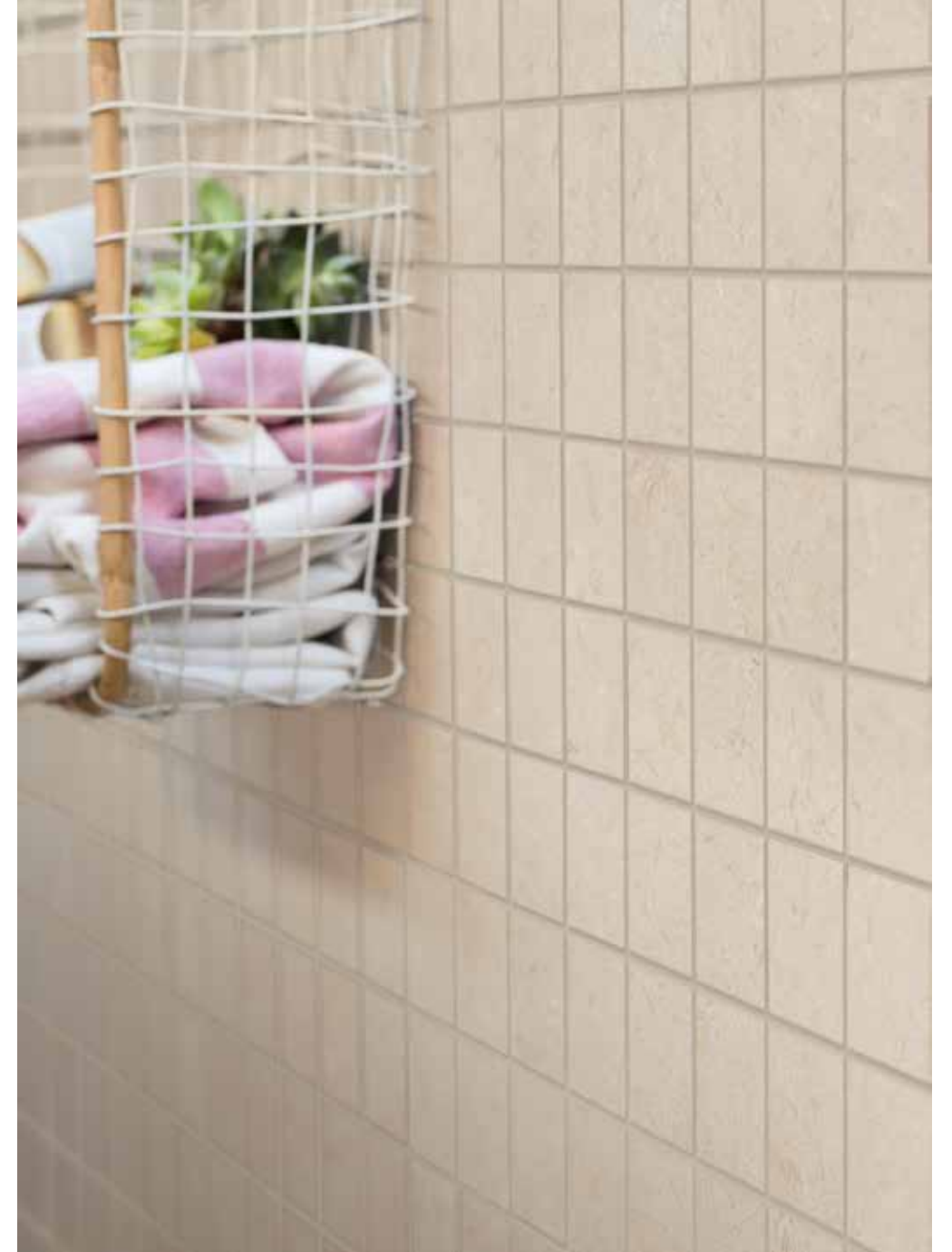
#KEYLARGO



#KEYWEST



#KEYHARBOR





unicomstarker
key collection



#keycollection #keylargo #mosaic
#30.2x30.2 #12"x12"



unicomstarker

Key West

KEY COLLECTION



#keycollection #keywest
#60.4x60.4 + 30.2x60.4 #24"x24" + 12"x24"
#keywestmosaic #30.2x30.2 #12"x12"



unicomstarker
key collection



#keycollection #keywest
#60.4x60.4 + 30.2x60.4 #24"x24" + 12"x24"





unicomstarker
key collection





unicomstarker
key collection



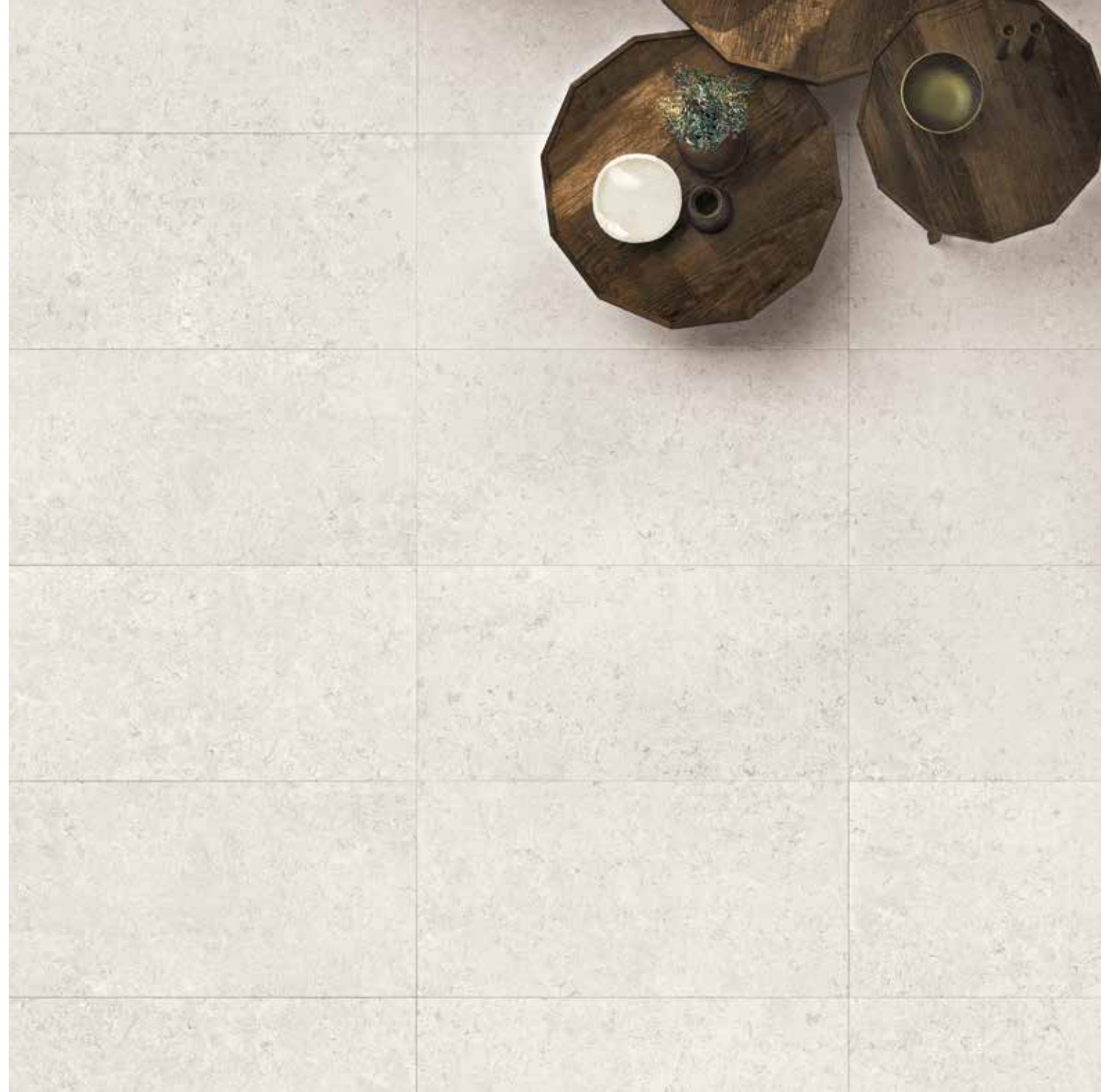
#keycollection #keywest
#60.4x120.8 #24"x48"



unicomstarker
key collection



#keycollection #keywest
#60.4x120.8 #24"x48"





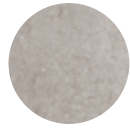
unicomstarker

Key Harbor

KEY COLLECTION



#keycollection #keyharbor
#60.4x120.8 #24"x48"

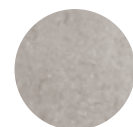


unicomstarker
key collection



#keycollection #keyharbor
#60.4x120.8 #24"x48"





unicomstarker
key collection



#keycollection #keyharbor
#60.4x120.8 #24"x48"

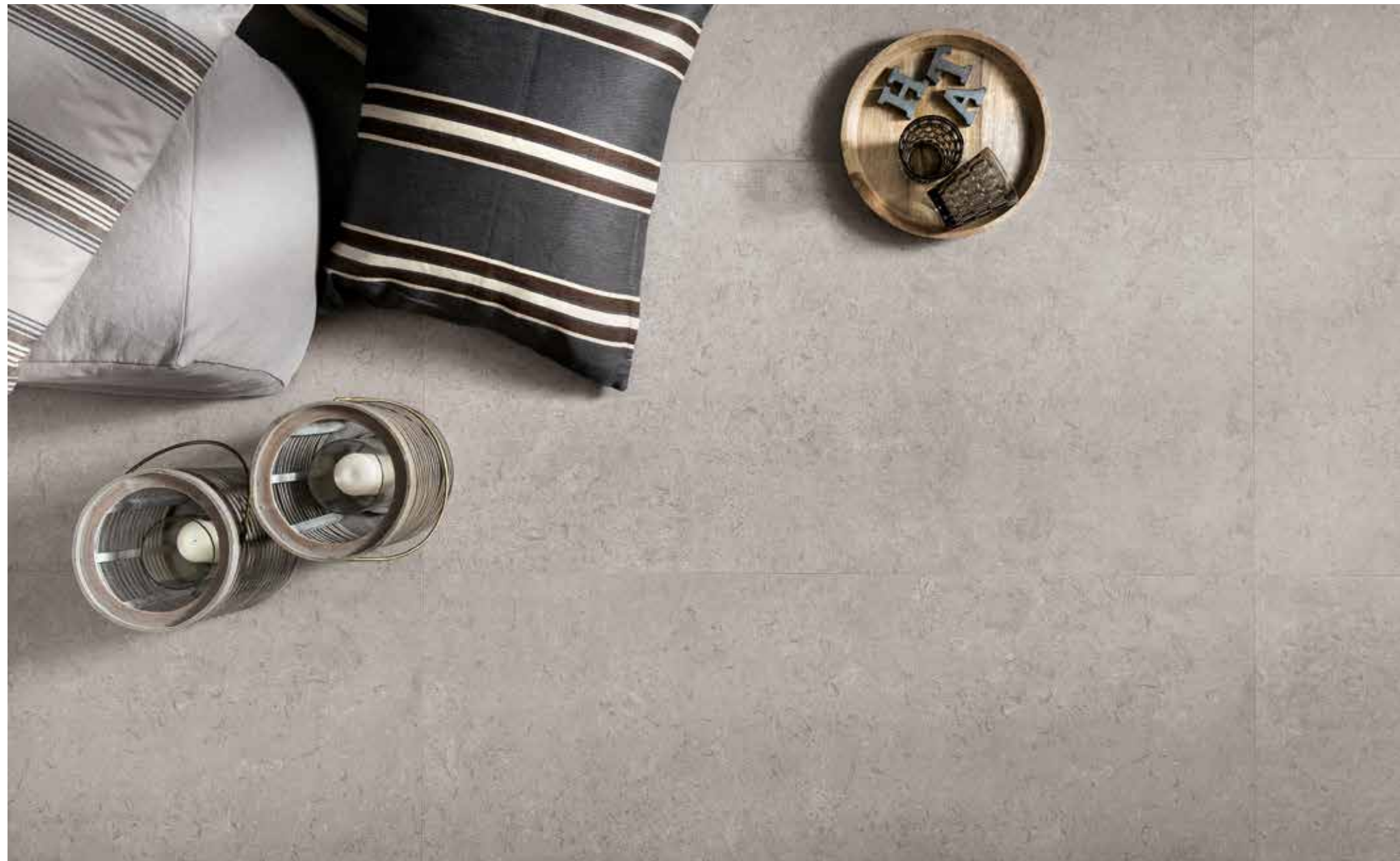


unicomstarker
key collection

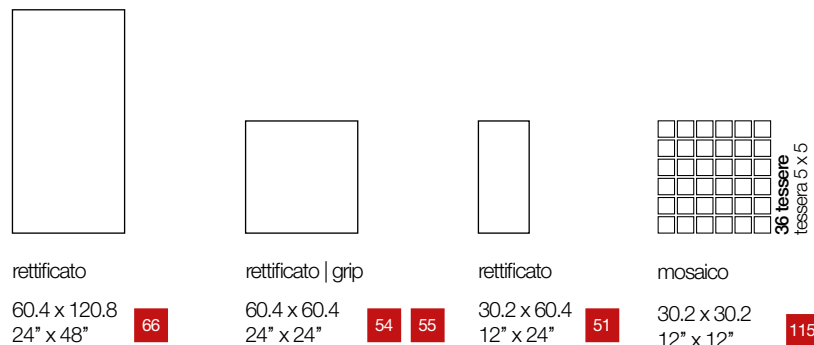


Key Harbor

#keycollection #keyharbor
#60.4x120.8 #24"x48"



Sizes



rettificato

60.4 x 120.8
24" x 48"

66

rettificato | grip

60.4 x 60.4
24" x 24"

54

55

rettificato

30.2 x 60.4
12" x 24"

51

mosaico

30.2 x 30.2
12" x 12"

115

per materiale rettificato prevedere una fuga di almeno 2 mm sul monoformato e necessariamente 3 mm sul multiformato

for rectified material, we recommend a 2 mm grout at least when using one size only and a 3 mm grout for multisizes laying solution

pour le matériel rectifié prévoir un minimum de 2mm de joint et 3mm pour la pose multiformat

fuer rettifiziertes material-monoverlegung wollen sie bitte eine fugen von 2 mm vorsehen – fuer modilverlegung eine fugen von 3 mm

Special Items



gradino
rettificato | grip

30.2 x 60.4
12" x 24"

33

34

gradone costa retta
rettificato | grip

30.2 x 60.4 x 4
12" x 24" x 1 2/3"

115

118

gradone ang. costa retta
rettificato | grip

30.2 x 30.2 x 4
12" x 12" x 1 2/3"

118

120

elemento a L
rettificato | grip

30.2 x 60.4 x 5
12" x 24" x 2"

49

50

battiscopa
smaltato rettificato

7 x 60.4
3" x 24"

15

Technicals

	ISO 10545-3	assorbimento d'acqua water absorption	<0.5%		ISO 10545-7	resistenza all'abrasione (PEI) resistance against abrasion (PEI)	IV key harbor V key largo - west	
	ISO 10545-4	resistenza alla flessione breaking strength	35 N/mm ²		naturale	DIN 51097 DIN 51130	coefficiente d'attrito (scivolosità) static coefficient of friction	A+B R9
	ISO 10545-13	resistenza agli acidi resistance to acid	GLA		grip	DCOF BOT 3000	> 0.42	
	ISO 10545-12	resistenza al gelo frost resistance	resiste frost proof		grip	DIN 51097 DIN 51130	coefficiente d'attrito (scivolosità) static coefficient of friction	A+B+C R12
	ISO 10545-14	resistenza alle macchie stain resistance	4			DCOF BOT 3000	variazioni cromatiche color shade variations	V3 variazione moderata V3 moderate variation
	UNI EN 101	durezza di Mohs hardness in Mohs degrees	6					
		spessore thickness	10mm		ISO 10545-2	planarità flatness		±0.5%

Packing

formato size		spessore thickness	pezzi/sc pcs/box	mq/sc sqm/box	kg/sc kgs/box	sc/pl box/pal	mq/pl sqm/pal	kg/pl kgs/pal
60.4x120.8	rettificato	10	2	1.46	32.00	35	51.10	1120.00
60.4x60.4	rettificato grip	10	4	1.46	31.50	30	43.80	945.00
30.2x60.4	rettificato	10	6	1.09	23.70	40	43.76	948.00
30.2x30.2	mosaico		11	1.00	21.65	36	36.11	779.40
7x60.4	battiscopa smaltato rettificato		12		11.76			
30.2x60.4	gradino rettificato grip		8		31.60			
30.2x60.4x4	gradone costa retta rettificato grip		4		20.40			
30.2x30.2x4	gradone angolare costa retta rettificato grip		4		12.40			
30.2x60.4x5	elemento a L rettificato grip rettificato		4		18.80			

il peso riportato è comprensivo del pallet di supporto
the indicated weight includes the supporting pallet
le poids indiquè est compris de la palette de support
das angegebene gewicht versteht sich einschließlic der palette





unicomstarker®

via flumendosa 7
41042 fiorano modenese
modena italy
T +39 (0)536 926011
F italy +39 (0)536 926038
F world +39 (0)536 926033
F europe +39 (0)536 926023

unicomstarker.com